

Angel Eyes II (Swivel type) Solar Street Light / Courtyard Light

Angel Eyes solar lights absorb energy from our sun and turn it into area illumination when it is dark. Their integrated photo voltaic module, micro controller and LiFePO4 battery combine with high output LEDs and a human infrared sensor to achieve multiple features such as low power consumption with high luminance. Their design delivers a long lifespan with minimal maintenance and provides a complete solution for off-grid or remote applications. IP65 rated components ensure endurance against harsh weather and keep Angel Eyes solar lights free from corrosion and premature failure. Swivel type are created for the application that customers need to adjust the angel of PV module and lamp holder to meet their installation requirement as well as enjoy the benefit of all-in-one design. Leadsun wishes your enjoyment of this highly innovative product and thank you for helping conserve this planet's resources by using products that reduce the consumption of earth's resources.

Features and Benefits

- Patent pending integrated design.
- Solar powered outdoor lighting
- Easy installation. No cable needed.
- Using LifePO4 battery to prolong product life and protect environment.
- Light output can be adjusted automatically by a built-in infrared sensor.
- Modularity design. Easy assemble and maintenance.
- Compact volume and light weight design saves freight cost and installation cost
- Rust-proof, dustproof and waterproof.
- Safety and reliability.
- Three years warranty.

Technical Data of **Solar Street Light**

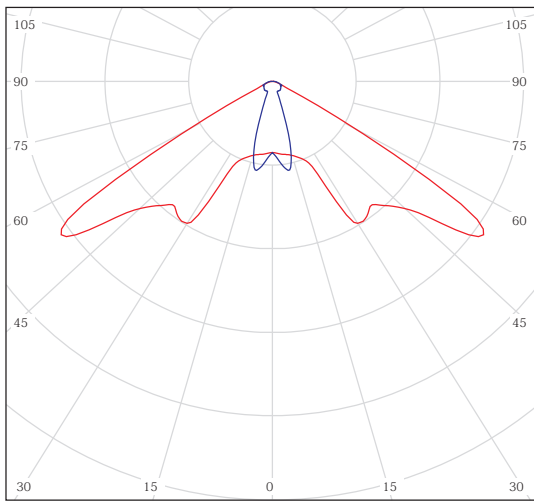
| P/N | | ASR1805M | ASR1808M | ASR2505M | ASR2510M | ASR3612M | ASR3616M |
|--|-----------------|-------------------------------|-------------|-------------------------------|--------------|--------------------------------|--------------|
| Physical Specification | | | | | | | |
| Light Source | | 5W LED lamp | 8W LED lamp | 5W LED lamp | 10W LED lamp | 12W LED lamp | 16W LED lamp |
| Solar Module | | 18W | 18W | 25W | 25W | 36W | 36W |
| LiFePO4 Battery | | Internal | | | | | |
| IR Sensor | | Yes | | | | | |
| Over-load/Over-charge/ Over-discharge Protection | | Yes | | | | | |
| Dimension | | 712 (L) × 306 (W) × 78 (T) mm | | 842 (L) × 306 (W) × 78 (T) mm | | 1356 (L) × 306 (W) × 78 (T) mm | |
| Net Weight | | 7.8kg | | 9.2kg | | 11.1kg | |
| Light Output | | | | | | | |
| Luminous flux (typ.) | Bright mode: | 397lm | 665lm | 397lm | 755lm | 880lm | 1275lm |
| | Dim mode: | 155lm | 228lm | 155lm | 312lm | 360lm | 420lm |
| Beam Type | | Bat wing | | | | | |
| Visual Angle | | 120° | | | | | |
| Color Temperature | | 5000K-6000K | | | | | |
| Light Photosensitivity (typ.) | | 30 lx | | | | | |
| Working Time* | Bright mode: | ≥14hrs | ≥9.5hrs | ≥14hrs | ≥9.5hrs | ≥10hrs | ≥8hrs |
| | Dim mode: | ≥42hrs | ≥28hrs | ≥42hrs | ≥28hrs | ≥30hrs | ≥24hrs |
| Environmental Rating | | | | | | | |
| Work Temperature | Charge Temp. | 0℃~+60℃ | | | | | |
| | Discharge Temp. | -20℃~+60℃ | | | | | |
| Storage Temperature | | -20℃~+45℃ | | | | | |
| IP Rate | | IP55 | | | | | |
| Installation | | | | | | | |
| Recommended Installation Height Range | | 2.5~3m | 3~4m | 2.5~3m | 3~4m | 3~5m | 4~6m |
| Recommended Installation Distance of Poles Range. | | 8~10m | 10~12m | 8~10m | 12~15m | 15~18m | 18~22m |

Technical Data of **Solar Courtyard Light**

| P/N | | ASR1805 | ASR1808 | ASR2505 | ASR2510 | ASR3612 | ASR3616 |
|--|-----------------|-------------------------------|-------------|-------------------------------|--------------|--------------------------------|--------------|
| Physical Specification | | | | | | | |
| Light Source | | 5W LED lamp | 8W LED lamp | 5W LED lamp | 10W LED lamp | 12W LED lamp | 16W LED lamp |
| Solar Module | | 18W | 18W | 25W | 25W | 36W | 36W |
| LiFePO4 Battery | | Internal | | | | | |
| IR Sensor | | Yes | | | | | |
| Over-load/Over-charge/ Over-discharge Protection | | Yes | | | | | |
| Dimension | | 712 (L) × 306 (W) × 78 (T) mm | | 842 (L) × 306 (W) × 78 (T) mm | | 1356 (L) × 306 (W) × 78 (T) mm | |
| Net Weight | | 7.8kg | | 9.2kg | | 11.1kg | |
| Light Output | | | | | | | |
| Luminous flux (typ.) | Bright mode: | 520lm | 790lm | 520lm | 980lm | 1230lm | 1578lm |
| | Dim mode: | 210lm | 280lm | 210lm | 370lm | 465lm | 580lm |
| Beam Type | | Round beam | | | | | |
| Visual Angle | | 120° | | | | | |
| Color Temperature | | 5000K-6000K | | | | | |
| Light Photosensitivity (typ.) | | 30 lx | | | | | |
| Working Time* | Bright mode: | ≥14hrs | ≥9.5hrs | ≥14hrs | ≥9.5hrs | ≥10hrs | ≥8hrs |
| | Dim mode: | ≥42hrs | ≥28hrs | ≥42hrs | ≥28hrs | ≥30hrs | ≥24hrs |
| Environmental Rating | | | | | | | |
| Work Temperature | Charge Temp. | 0℃~+60℃ | | | | | |
| | Discharge Temp. | -20℃~+60℃ | | | | | |
| Storage Temperature | | -20℃~+45℃ | | | | | |
| IP Rate | | IP55 | | | | | |
| Installation | | | | | | | |
| Recommended Installation Height Range | | 3~4m | 3~4m | 3~4m | 3~5m | 4~6m | 4~6m |
| Recommended Installation Distance of Poles Range. | | 7~8m | 8~10m | 7~8m | 10~12m | 12~15m | 15~18m |

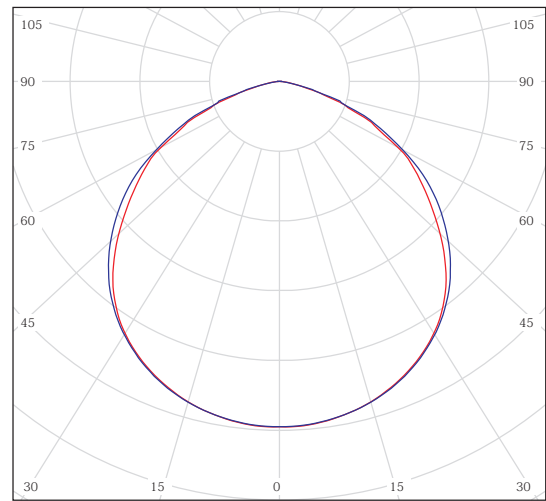
*Working time data as above are based on 8 hours of charging in good sunny days in summer, measured at the latitude 22°, east longitude 113°. Actual working time might be different according to difference of area, season, environment and direction.

Light distribution curve



cd/klm
— C0 - C180 — C90 - C270

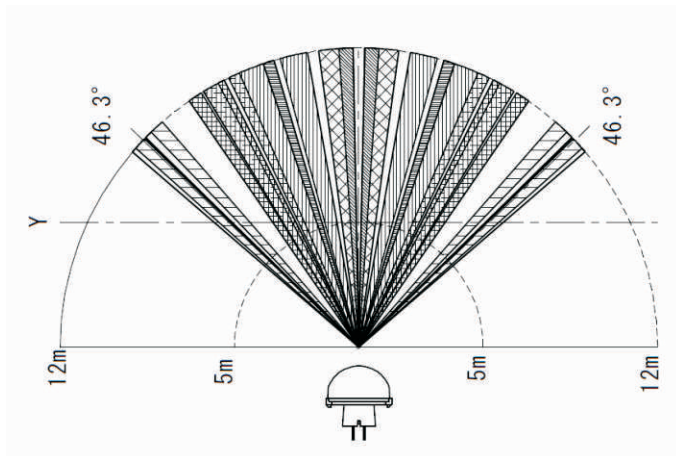
Bat wing (models with the suffix M)



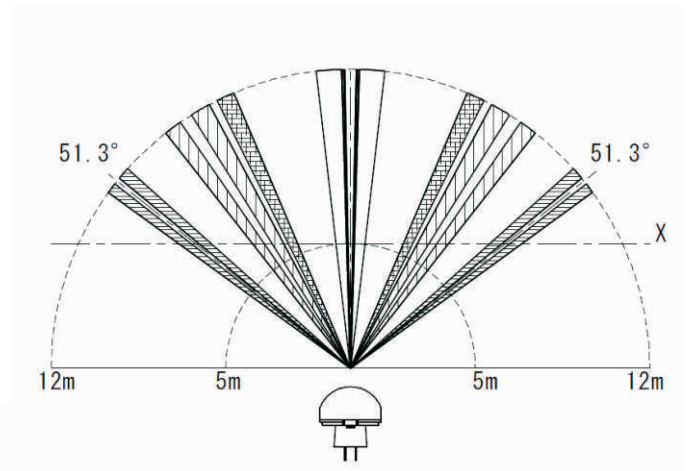
cd/klm
— C0 - C180 — C90 - C270

Round beam

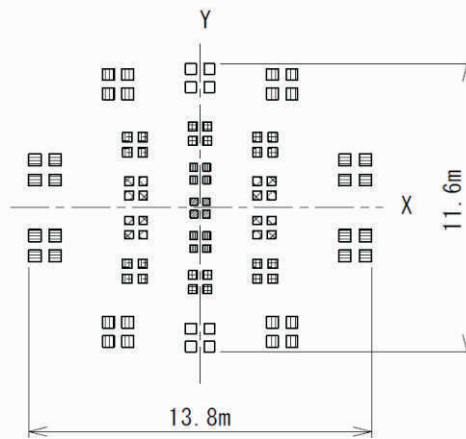
PIR Detection Area



Vertical

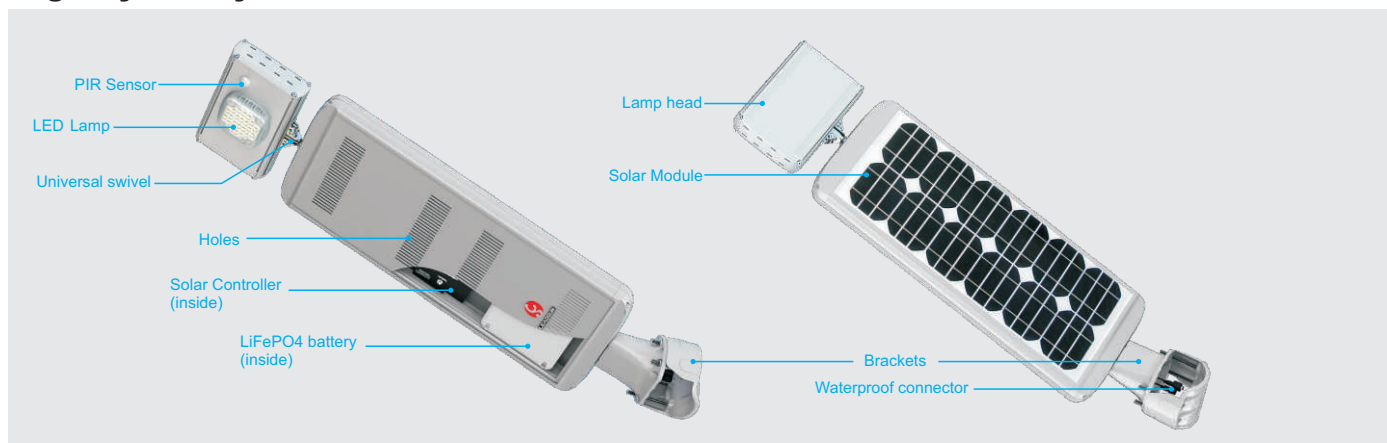


Horizontal

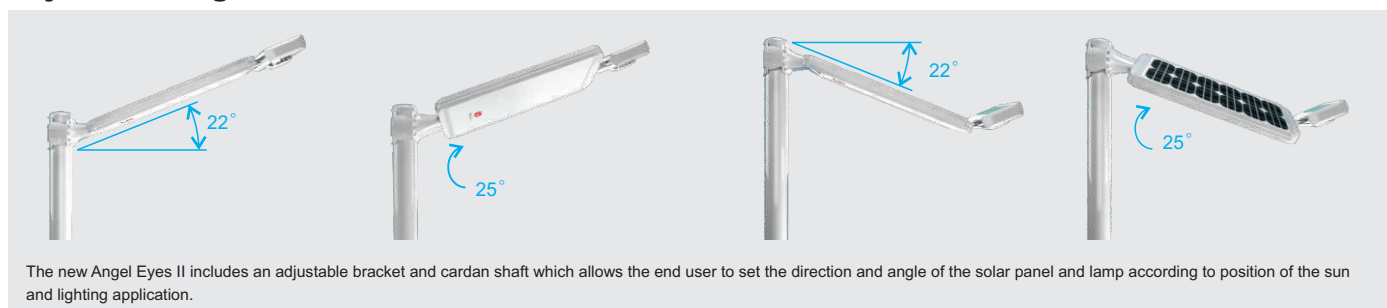


X-Y Cross Section (range 5m)

Angel Eyes Body



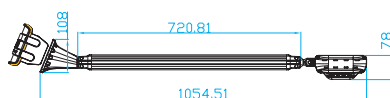
Adjustable Angle



Physical Dimensions



ASR1805(M)/ASR1810(M)



ASR2505(M)/ASR2510(M)



ASR3612(M)/ASR3616(M)



Leadsun Electronic Technology Co.,Ltd.

Tel:86-0756-2289712 Fax:086-0756-8682090

E-mail:sales@leadsun.com.cn

LEADSUN Electronics Technology Co., Ltd reserves the rights to amend and improve the product appearance, construction and function without any prior notification. Please make the original product as the standard in case of any difference in description. LEADSUN guarantees that this User Manual has been checked and edited, but does not hold the responsibility for any loss caused.